

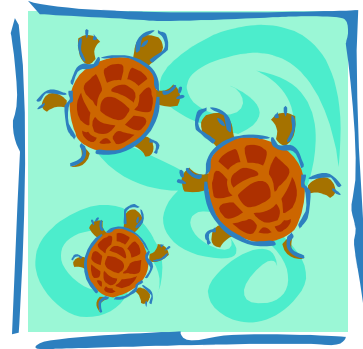
MT. KEARSARGE
INDIAN MUSEUM



Mt. Kearsarge Indian Museum
PO Box 142
Warner, NH 03278

Mt. Kearsarge Indian Museum Warner, NH

Turtle Island



2009 Summer Day Camp

**Where children experience
cultural enrichment,
environmental awareness,
and outdoor fun.**

Ages 6 - 12 ☀ Weekly sessions
June 29 - August 7, Monday - Friday

A FUN, EDUCATIONAL CAMP LINKED TO AMERICAN INDIAN CULTURE FOR TODAY'S CHILDREN

Mt. Kearsarge Indian Museum's (MKIM) Turtle Island Camp offers children a chance to experience Native American culture through:

- ◇ activities and games
- ◇ adventure and exploration
- ◇ storytelling, music and art

Each week-long session will include visits from special guests and/or Native American tradition bearers.

CAMP SPECIFICS

Age groups: Spotted Turtles: 6 - 8
Wood Turtles: 9 - 13

Monday - Friday, 9am - 3pm
Drop-off from 8:30 - 9:00am
Extended Care: 8-8:30 a.m., 3-5 p.m.

STAFF

Staff is composed of **trained instructors** who have experience with children and are **certified in First Aid.**

Camper to staff ratio is **6 to 1.**

FACILITIES

A **program barn** provides shelter and the **museum galleries** offer educational opportunities. Outdoor exploration takes place on **10 acres of fields and forest**, including the tranquil **Medicine Woods Nature Trail**. Turtle Island is **licensed by the State of New Hampshire.**

CAMP COSTS

Weekly sessions

\$185/MKIM Member

\$215/Not-Yet-Member

Membership must be at family level or above. Annual family membership is \$55.

Join now! See registration form.

Extended Care

Weekly a.m. \$20/Member, \$25/NM

Weekly p.m. \$80/Member, \$100/NM

Discounts

Family Discount: 10% off each additional sibling, after initial enrollment at full price.

Multi-session Discount: 10% off additional sessions, after initial enrollment at full price. Discounts may not be combined.

Financial Assistance

Partial camperships are available on a limited basis. Please call 603-456-2600 for an application.

Questions?

Contact the MKIM Staff

P: 603-456-2600

E: mkim.education@tds.net

F: 603-456-3092

www.indianmuseum.org

